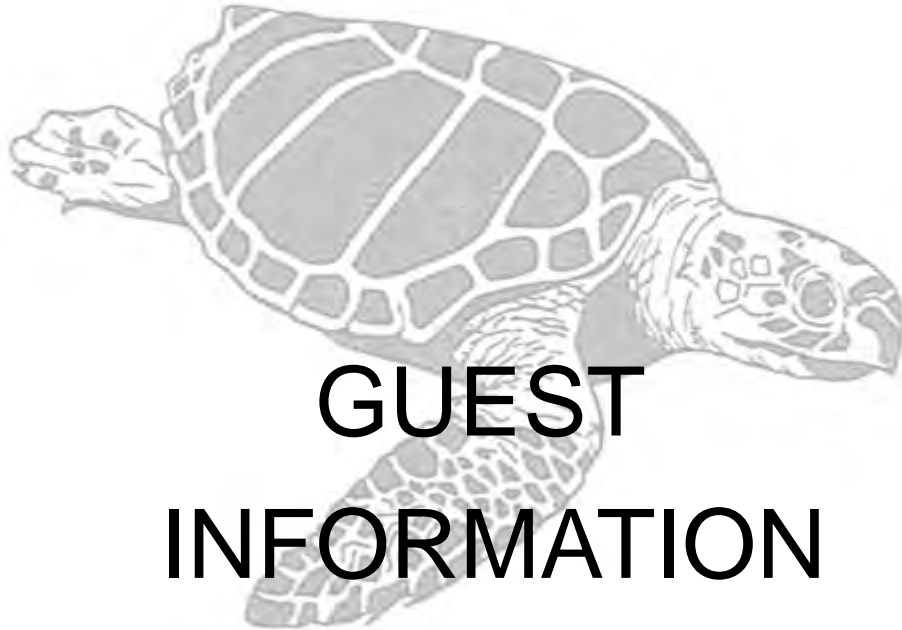




RELEASE AND UNWIND

Palm Beach Gardens

2700 Donald Ross Rd,
Palm Beach Gardens, FL



GUEST
INFORMATION

Scan this QR code to view
the Guest Information Packet online



Toll Free: 1-888-LOGGER2

Direct: 561-627-6358 | Fax: 561-627-7523



RELEASE AND UNWIND

Directions to Loggerhead Club & Marina® – Palm Beach Gardens

By Water: (VHF Channel # 16)

- You can access Loggerhead Club & Marina - Palm Beach Gardens by water off the Intracoastal Waterway just south of the Donald Ross Bridge. We are located approximately midway between the Lake Worth Inlet (10 miles, 1 hour, 15 minutes) and the Jupiter Inlet (6 miles, 40 minutes). The entrance to the marina is 100 yards south of the Donald Ross Bridge on the west side of the Intracoastal Waterway. Follow the signs at the channel entrance.

By Land:

- All I-95 traffic should exit at Donald Ross Road and head east. Loggerhead Club & Marina is located on the south side (right) of Donald Ross Road, prior to going over the Intracoastal Waterway Bridge.
- Northbound travelers should exit the Florida Turnpike at PGA Blvd. and go north on I-95. Southbound travelers should exit the Florida Turnpike at Indiantown Road and go south on I-95. All I-95 traffic should exit at Donald Ross Road and head east. Loggerhead Club & Marina is located on the south side (right) of Donald Ross Road, prior to going over the Intracoastal Waterway Bridge.

Marina Information

Dock/Rack Layout

- 130 wet slips for boats 30 to 120 feet in length
- There is no dry storage at this Loggerhead Marina location. However, the Jupiter, Riviera Beach, Lantana, and Miami locations have hurricane-rated dry storage barns.

Marine Fuel

- Loggerhead Club & Marina® - Palm Beach Gardens sells ValvTect marine specific 90 octane non ethanol gasoline and ValvTect marine grade diesel, offered exclusively at all Loggerhead Club & Marina locations. We also offer our Members a discount on all fuel purchases. Contact the Harbor Master for more information.

On- Site Utilities

- Power pedestals
- Sanitation pump-out
- Fueling
- Mail services


Toll Free: 1-888-LOGGER2

Direct: 561-627-6358 | Fax: 561-627-7523




RELEASE AND UNWIND


Marina Depth

 The depth of the marina is 8 feet

In the Event of an After-Hours Emergency

 The marina office phones are forwarded nightly to an answering service. The service will contact the harbormaster or another Loggerhead Club & Marina official in the event of an emergency. If the incident involves an injury or the law is being broken, please dial 911. A call to the marina office will also be appreciated (561) 627-6358. VHF Channel #

Local Fixed Bridges

 A fixed bridge exists as you head south through the Intracoastal Waterway at Blue Heron Blvd. The Blue Heron Bridge has a 65-foot clearance. You will go under the bridge before or after you utilize the Lake Worth Inlet. The Donald Ross Bridge and the Parker Bridge open on the half-hour. The PGA Bridge opens on the quarter-hour.

In the Area:

Airports

Palm Beach International Airport	1000 Palm Bch Intl Airport Unit 125, West Palm Beach, FL	(561) 471-7400
Ft. Lauderdale International Airport	100 Aviation Blvd, Fort Lauderdale, FL	(954) 359-1200
Miami International Airport	N.W. 20th Street & Lejune Road, Miami, FL	(305) 871-4100

Drugstores

CVS	14000 US Highway 1, Juno Beach, FL 33408	(561) 622-9414
Publix Pharmacy	5500 Military Trl Ste 25, Jupiter, FL	(561) 799-3190

Entertainment

Cobb Movie Theatre	201 N US Highway 1, Jupiter, FL	(561) 747-7333
Downtown at the Gardens	11701 Lake Victoria Gdns # 2202, Palm Beach Gdns, FL	(561) 340-1600



RELEASE AND UNWIND

Golf and Tennis

North Palm Beach Municipal	951 US Highway 1, North Palm Beach, FL	(561) 691-3433
Johnathan's Landing Golf and Tennis	16823 Captain Kirle Dr, Jupiter, FL	(561) 748-7406
PGA National Golf Club	16823 Captain Kirle Dr, Jupiter, FL	(561) 748-7406

Grocery Stores

Publix	4060 S US Highway 1, Jupiter, FL	(561) 694-2662
Carmine's Gourmet Market	2401 Pga Blvd Ste 172, Palm Beach Gardens, FL	(561) 775-0105
Publix Greenwise	11231 Legacy Ave, Palm Beach Gardens, FL	(561) 514-5175

Health Care

Jupiter Medical Center	1210 S Old Dixie Hwy, Jupiter, FL	(561) 747-2234
St. Mary's Medical Center ER	901 45th St, West Palm Beach, FL	(561) 844-6300
North Palm Beach Animal Clinic	719 Northlake Blvd, North Palm Beach, FL	(561) 844-0844
Jupiter Animal Hospital	426 W Indiantown Rd, Jupiter, FL	(561) 746-8888

Health Clubs

LA Fitness	11231 Legacy Ave, Palm Beach Gardens, FL	(561) 273-7080
Gold's Gym	4540 Donald Ross Rd, Palm Beach Gardens, FL	(561) 799-1515

Hotels

Homewood Suites Hilton	4700 Donald Ross Rd, Palm Beach Gardens, FL	(561) 622-7799
Juno Beach Hampton Inn	13801 US Highway 1, Juno Beach, FL	(561) 626-9090

Liquor Stores

Juno Beach Liquor	13977 US Highway 1, Juno Beach, FL	(561) 624-9070
Reserve Wine & Spirits	5440 Military Trl Ste 3, Jupiter, FL	(561) 776-1663

Toll Free: 1-888-LOGGER2

Direct: 561-627-6358 | Fax: 561-627-7523



RELEASE AND UNWIND

Mail & Shipping

US Post Office	3330 Fairchild Gardens Ave, Palm Beach Gardens, FL	(561) 799-4068
UPS Store	11231 US Highway 1, North Palm Beach, FL	(561) 691-4095

Places of Interest

Loggerhead Marine life Center	14200 US Highway 1, North Palm Beach, FL	(561) 627-8280
Jupiter Inlet Lighthouse Museum	500 Captain Armours Way, Jupiter, FL	(561) 747-8380
The Gardens Mall	3101 Pga Blvd, Palm Beach Gardens, FL	(561) 775-7750
Palm Beach International Raceway	17047 Bee Line Hwy, Jupiter, FL	(561) 622-1400
Ground Swell Surf Shop	811 Donald Ross Rd, Juno Beach, FL	(561) 622-7878
Burt Reynolds Museum	100 N US Highway 1 Ste 102, Jupiter, FL	(561) 743-9955

Marine Sales

Exclusive Yacht Group	140 Intracoastal Pointe Drive Suite 110, Jupiter, FL	(561) 745-2780
HMY Yacht Sales	2401 Pga Blvd Ste 182, Palm Beach Gardens, FL	(561) 775-6000
MacGregor Yachts	2352 Pga Blvd, Palm Beach Gardens, FL	(561) 799-6511
Palm Beach Power Boats	105 S Narcissus Ave Ste 712, West Palm Beach, FL	(561) 514-0855

Marine Services

Sea Tow		(561) 844-8056
Bill Clark Marine	2116 Avenue B, Riviera Beach, FL	(561) 842-4995
Florida Rigging & Hydraulics	3905 Investment Ln Ste 9, Riviera Beach, FL	(561) 863-7444

Toll Free: 1-888-LOGGER2

Direct: 561-627-6358 | Fax: 561-627-7523



RELEASE AND UNWIND

Restaurants

Food Shack	103 S US Highway 1 Ste D3, Jupiter, FL	(561) 741-3626
Yard House	11701 Lake Victoria Gardens Ave, Palm Beach Gardens, FL	(561) 691-6901
Captain Charlie's	12846 US Highway 1, Juno Beach, FL	(561) 624-9924
Cabo Flats	11701 Lake Victoria Gardens Ave, Palm Beach Gardens, FL	(561) 624-0024
Big Apple Pizza & Pasta	11249 US Highway 1, North Palm Beach, FL	(561) 627-5001
Bagel Boyz	5430 Military Trl Ste 80, Jupiter, FL	(561) 624-9884
Lazy Loggerhead Café	401 N Highway A1a Alt, Jupiter, FL	(561) 747-1134
Square Grouper Tiki Bar	1111 Love St, Jupiter, FL	(561) 575-0252
Guanabana's	960 N Highway A1a, Jupiter, FL 33477	(561) 747-8878
The Thirsty Turtle	13981 US Highway 1, Juno Beach, FL	(561) 627-8991
Outback Steak House	10933 N Military Trl, West Palm Beach, FL	(561) 625-0793
Dunkin Doughnuts	803 Donald Ross Rd, Juno Beach, FL	(561) 624-0103

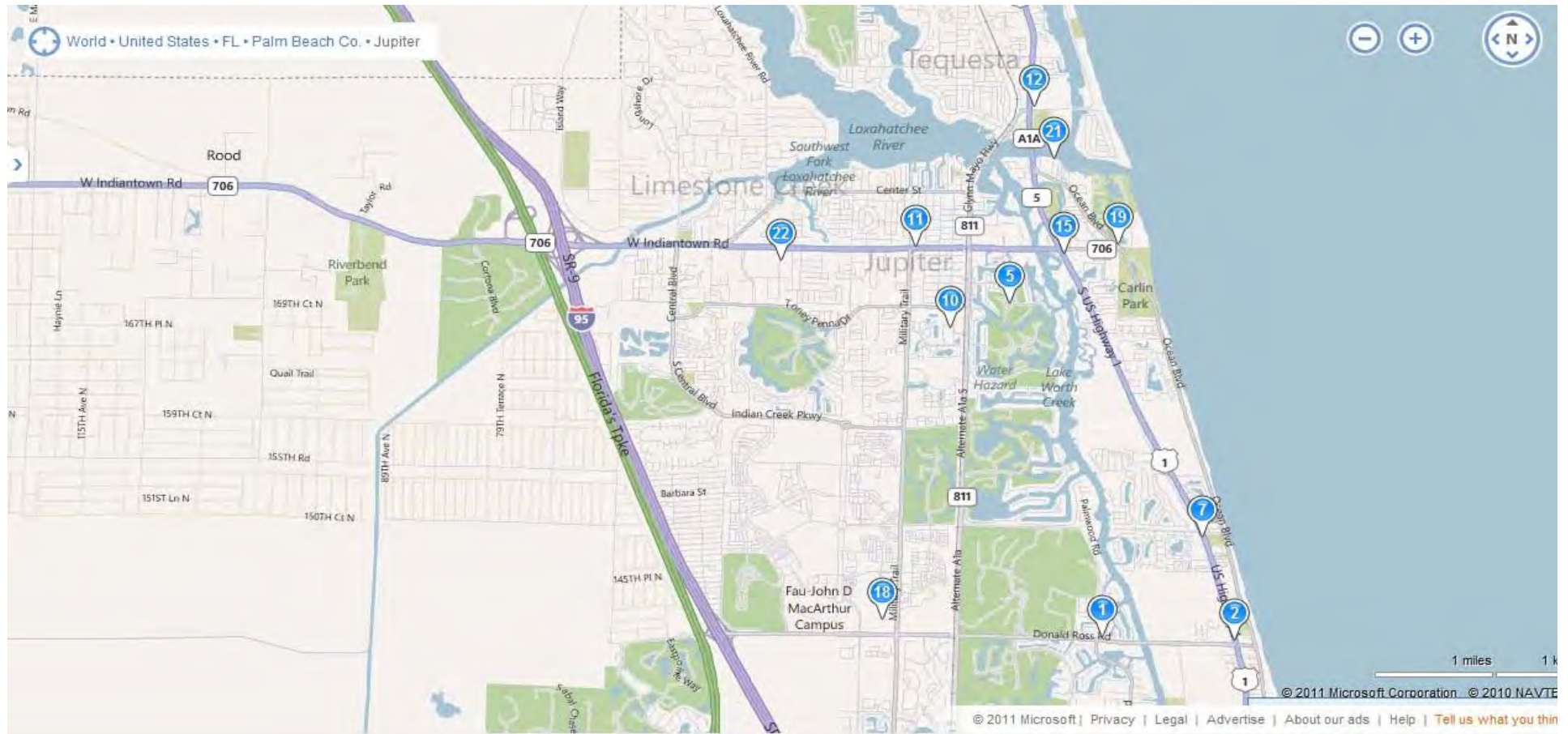
Transportation Services

Enterprise Rent-a-Car	280 Toney Penna Dr Ste 5, Jupiter, FL	(561) 575-3262
Budget Rent a Car	211 Commerce Way, Jupiter, FL	(561) 746-1209
Blue Star Taxi Service		(561) 844-7366
Dave's Taxi		(561) 743-8642
All American Taxi		(561) 651-7070
An Ultimate Limousine	975 Military Trl, Jupiter, FL	(561) 575-7353
Palm Beach Bicycle Trail Shop	Palm Beach Bicycle Trail Shop 233 Sunrise Avenue Palm Beach, Florida 33480	(561) 659-4583
Lake Park Bicycles	1438 10th St Lake Park, FL 33403	(561) 842-0303
J-Town Bicycle	126 Center St Ste B1, Jupiter, FL	(561) 575-2453

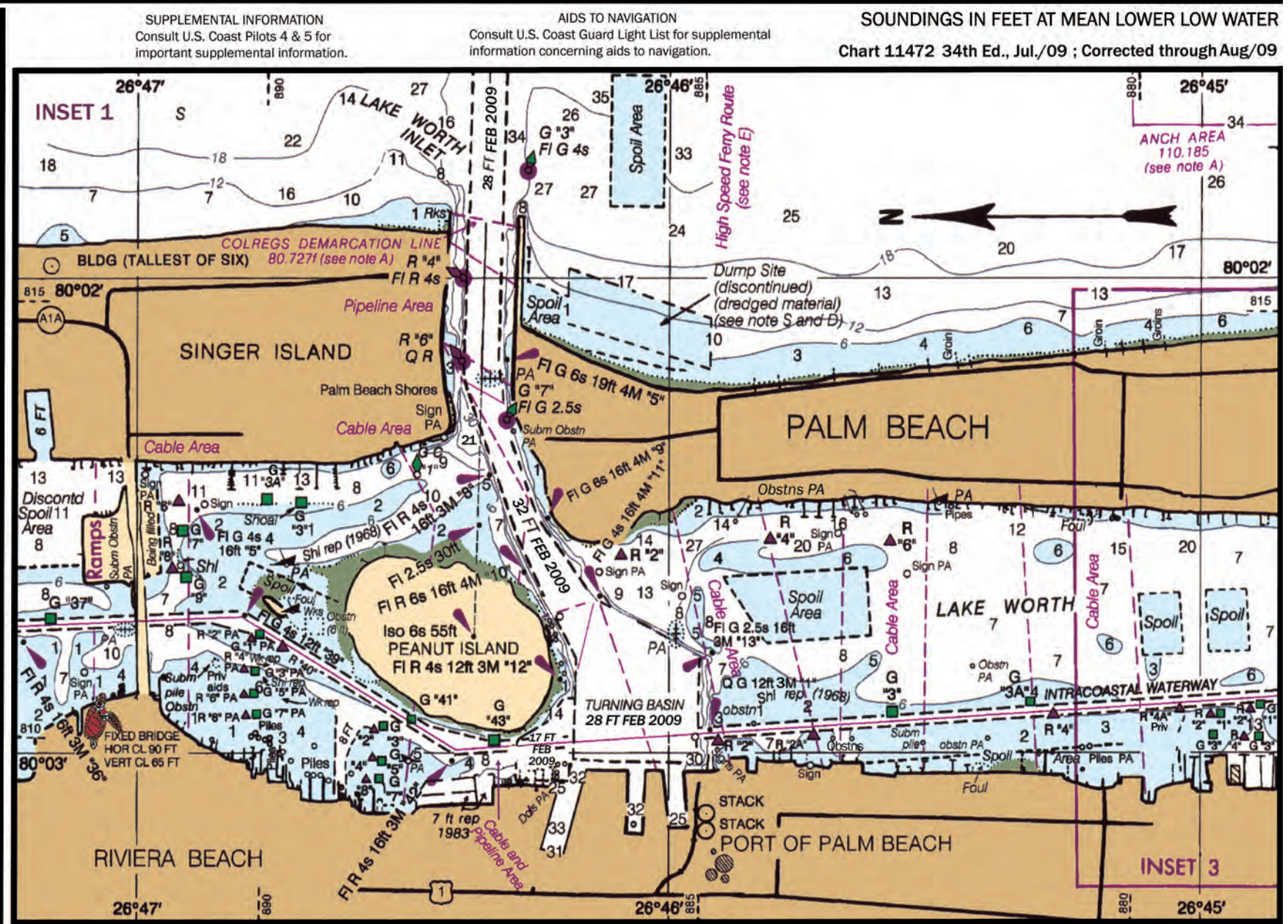
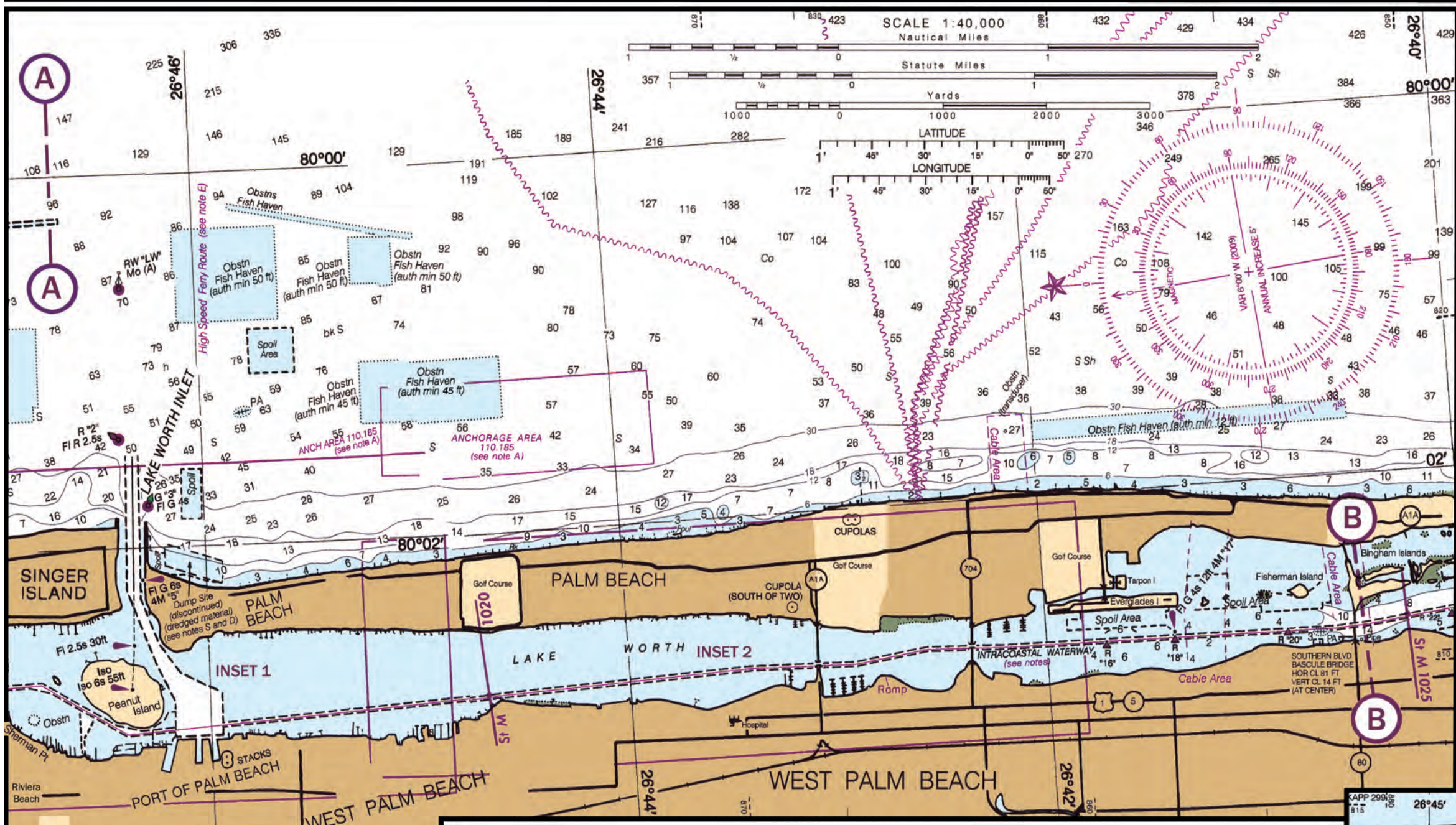
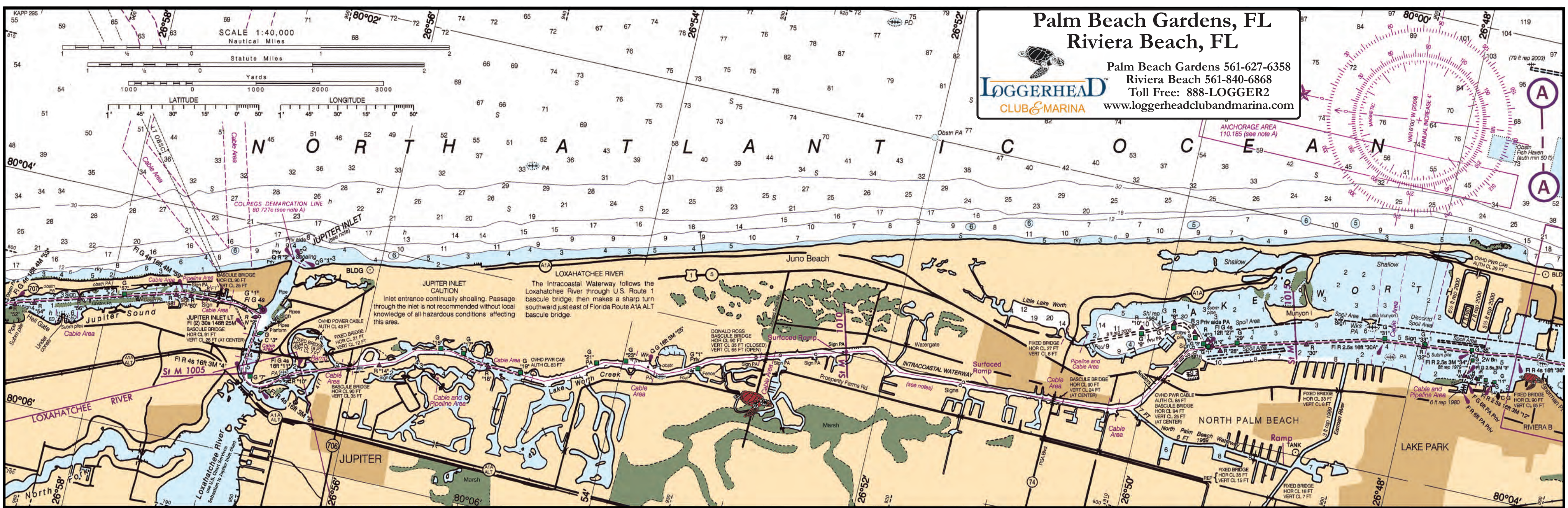
US Customs & Immigration

US Immigration and Customs Enforcement – Riviera Beach	1 East 11th Street, Suite 323, Box #4, Riviera Beach, FL	(561) 844-1703
--	--	----------------

Palm Beach Gardens Area Map



- | | | | |
|---|---|--|--|
| <p>1. Loggerhead Club & Marina
2700 Donald Ross Rd, Palm Beach Gardens, FL</p> | <p>6. PGA National Golf
400 Avenue Of Champions, Palm Beach Gardens, FL</p> | <p>11. Jupiter Animal Hospital
426 W Indiantown Rd, Jupiter, FL</p> | <p>17. Captain Charlies
12846 US Highway 1, Juno Beach, FL</p> |
| <p>2. CVS Pharmacy
14000 US Highway 1, Juno Beach, FL</p> | <p>7. Publix Super Market
4060 S US Highway 1, Jupiter, FL</p> | <p>12. Jupiter Inlet Lighthouse Store
500 Captain Armours Way, Jupiter</p> | <p>18. Bagel Boyz
5430 Military Trl Ste 80, Jupiter, FL</p> |
| <p>3. Downtown At the Gardens
11701 Lake Victoria Gdns # 2202, Palm Beach Gdns, FL</p> | <p>8. Carmine's Gourmet Market
2401 Pga Blvd Ste 172, Palm Beach Gardens, FL</p> | <p>13. LA Fitness
7100 Fairway Dr Ste 49, Palm Beach Gardens, FL</p> | <p>19. Lazy Loggerhead Cafe
401 N Highway A1a Alt, Jupiter, FL</p> |
| <p>4. N. Palm Beach Golf Course
951 US Highway 1, West Palm Beach,</p> | <p>9. Publix Super Market
11231 Legacy Ave, Palm Beach Gardens, FL</p> | <p>14. Gardens Mall
3101 PGA Blvd, Palm Beach Gardens,</p> | <p>20. Big Apple Pizza & Pasta
11249 US Highway 1, North Palm Beach, FL</p> |
| <p>5. Jonathan's Landing Golf
16823 Captain Kirle Dr, Jupiter, FL</p> | <p>10. Jupiter Medical Ctr
1210 S Old Dixie Hwy, Jupiter, FL</p> | <p>15. Food Shack
103 S US Highway 1 Ste D3, Jupiter,</p> | <p>21. Square Grouper Tiki Bar
1111 Love St, Jupiter, FL</p> |
| | | <p>16. Yard House
11701 Lake Victoria Gardens Ave, Palm Beach Gardens, FL</p> | <p>22. Budget Rent A Car
211 Commerce Way, Jupiter, FL</p> |



DISCLAIMER
This chart is published and distributed by U.S. Chart Services, Inc. U.S. Chart Services, Inc. has copied, cropped and edited data from OceanGrafix charts to produce this chart. Some of the copied data is copyright protected by OceanGrafix and is used with permission. OceanGrafix makes no claims that the copied data is accurate or suitable for the intended use of the recipient or purchaser and offers no warranty concerning the chart's fitness for use. The data contained in this chart may not be reproduced in any form without written permission from U.S. Chart Services, Inc. and OceanGrafix. OceanGrafix, U.S. Chart Services, Inc., as well as advertisers and distributors of this product can not be responsible for any errors or omissions which may occur in the printing of this imaged product. All persons using this product are CAUTIONED to use the practices of good seamanship and consult Notice to Mariners when using this information.

ABBREVIATIONS
(For complete list of Symbols and Abbreviations, see Chart No. 1.)

AIDS TO NAVIGATION
Consult U.S. Coast Guard Light List for supplemental information concerning aids to navigation.

RADAR REFLECTORS
Radar reflectors have been placed on many floating aids to navigation. Individual radar reflector identification on these aids has been omitted from this chart.

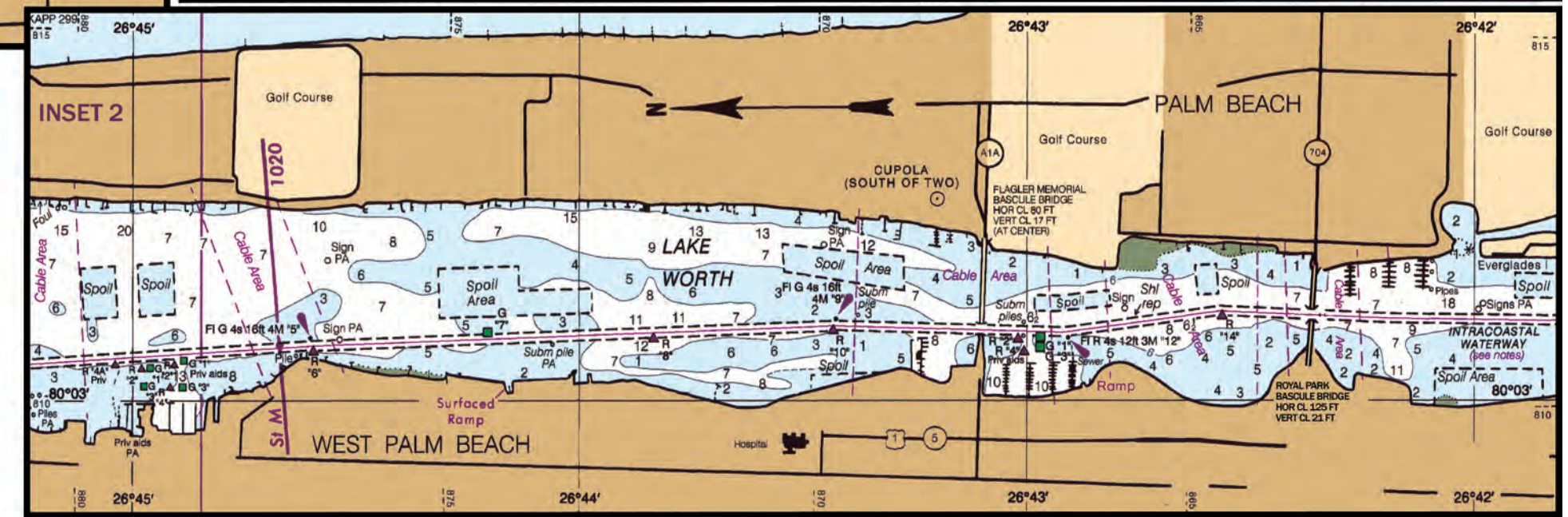
CAUTION
Temporary changes or defects in aids to navigation are not indicated on this chart. See Local Notice to Mariners.

WARNING
The prudent mariner will not rely solely on any single aid to navigation, particularly on floating aids. See U.S. Coast Guard Light List and U.S. Coast Pilot for details.

CAUTION
Small craft should stay clear of large commercial and government vessels even if small craft have the right-of-way. All craft should avoid areas where the skin divers flag, a red square with a diagonal white stripe, is displayed.

SUPPLEMENTAL INFORMATION
Consult U.S. Coast Pilots 4 & 5 for important supplemental information.

CAUTION
Improved channels shown by broken lines are subject to shoaling, particularly at the edges.



SOUNDINGS IN FEET AT MEAN LOWER LOW WATER
Chart 11472 34th Ed., Jul./09 ; Corrected through Aug/09

AIDS TO NAVIGATION
Consult U.S. Coast Pilot 4 & 5 for important supplemental information.

AIDS TO NAVIGATION
Consult U.S. Coast Pilot 4 & 5 for important supplemental information.